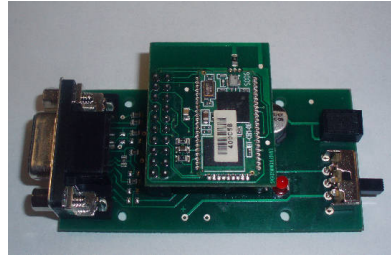


## Features

EVAL-BLUEMORE106 is the easiest system to setup and test bluemore106 modules

The Female connector allows to fix the bluemore106 module and the leds show the Bluetooth activity of the module (connections etc)



bluemore106 modules with EikonAT firmware are easily setted using EVAL-BLUEMORE106 and RS232-BT setup software (from our website) or using directly AT-commands (please download the application note of the EikonAT firmware)

RS232 DB9 Female DTE connector

5V power supply (from DC connector or by Pin9 of the DB9)

Size: 70mm x 35mm

## Features

- Suitable for bluemore106 modules
- Direct connection to PC for setup by RS232-BT software
- 5V power supply
- Pin9 DB9 +5V provided
- Size 70 X 35 mm

## Benefits

- Start to use our modules in 5 minutes
- Perfectly fits our UART modules
- RS232-BT software for Bluetooth module setup

## Applications

- Setup of UART modules
- Testing of UART modules

### **Eikon srl**

Via Borgognina 5  
61030 Lucrezia di Cartoceto (PU) Italy  
Vat IT02036680417

Tel +39 0721 877365      Fax +39 0721 897679  
Web [www.eikonsite.it](http://www.eikonsite.it)      Email [info@eikonsite.it](mailto:info@eikonsite.it)

### **Local reseller**