

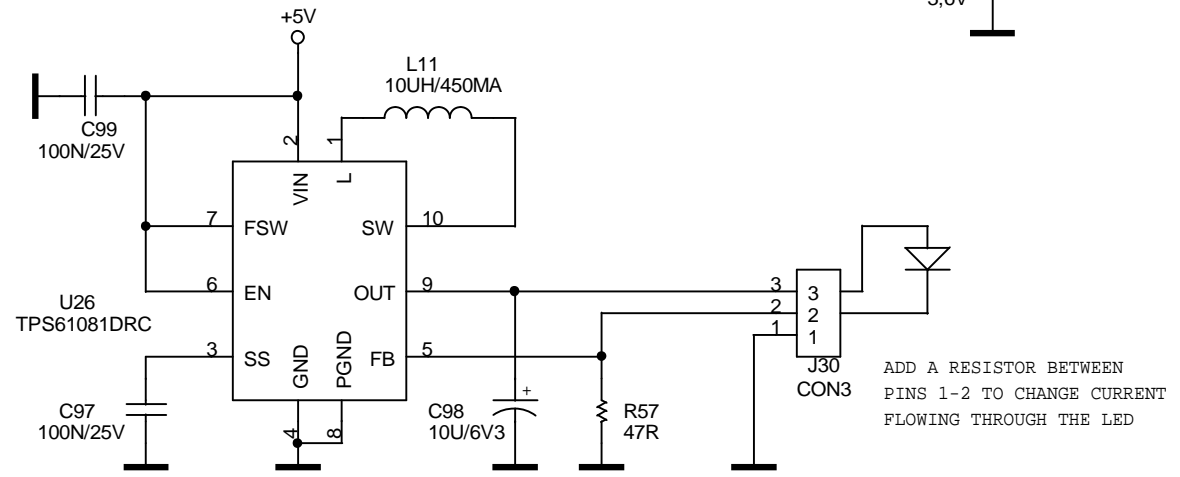
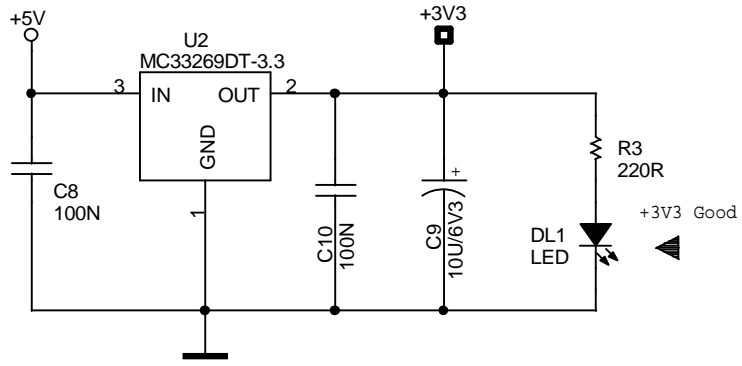
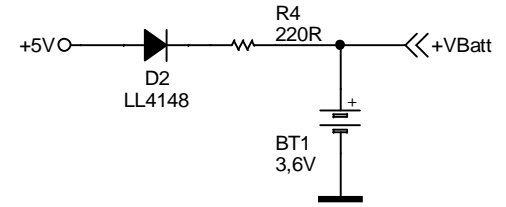
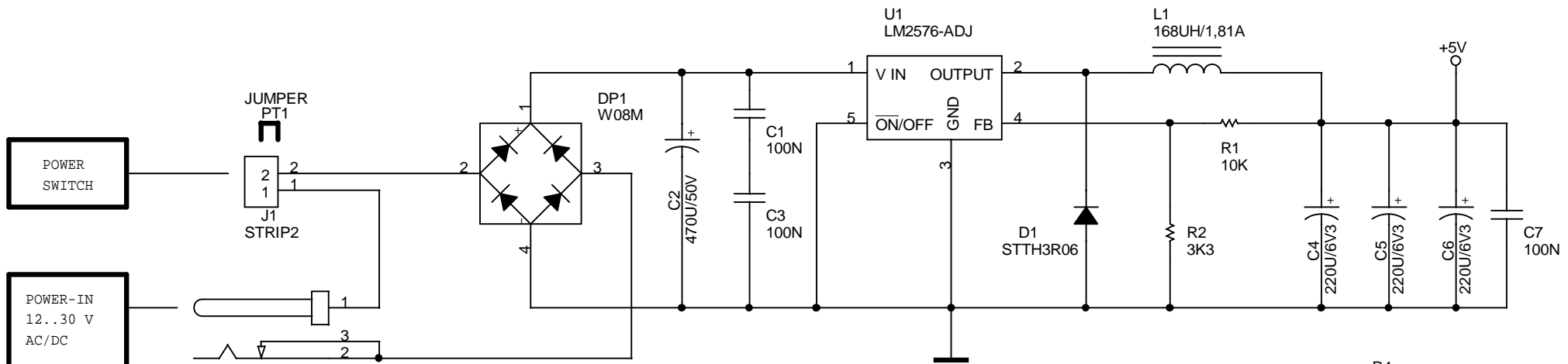
Schematic: TRUMPET

Version: 1.1

- PAGE01 - This Page
- PAGE02 - POWER
- PAGE03 - VIDEO
- PAGE04 - PS2(MOU-KBD) / KEYPAD
- PAGE05 - CPU/SD/ETHERNET
- PAGE06 - UART1-2
- PAGE07 - RELE/INPUTS/OUTPUTS
- PAGE08 - USB HOST
- PAGE09 - AUDIO
- PAGE10 - UART3-4
- PAGE11 - CAN

Variante1

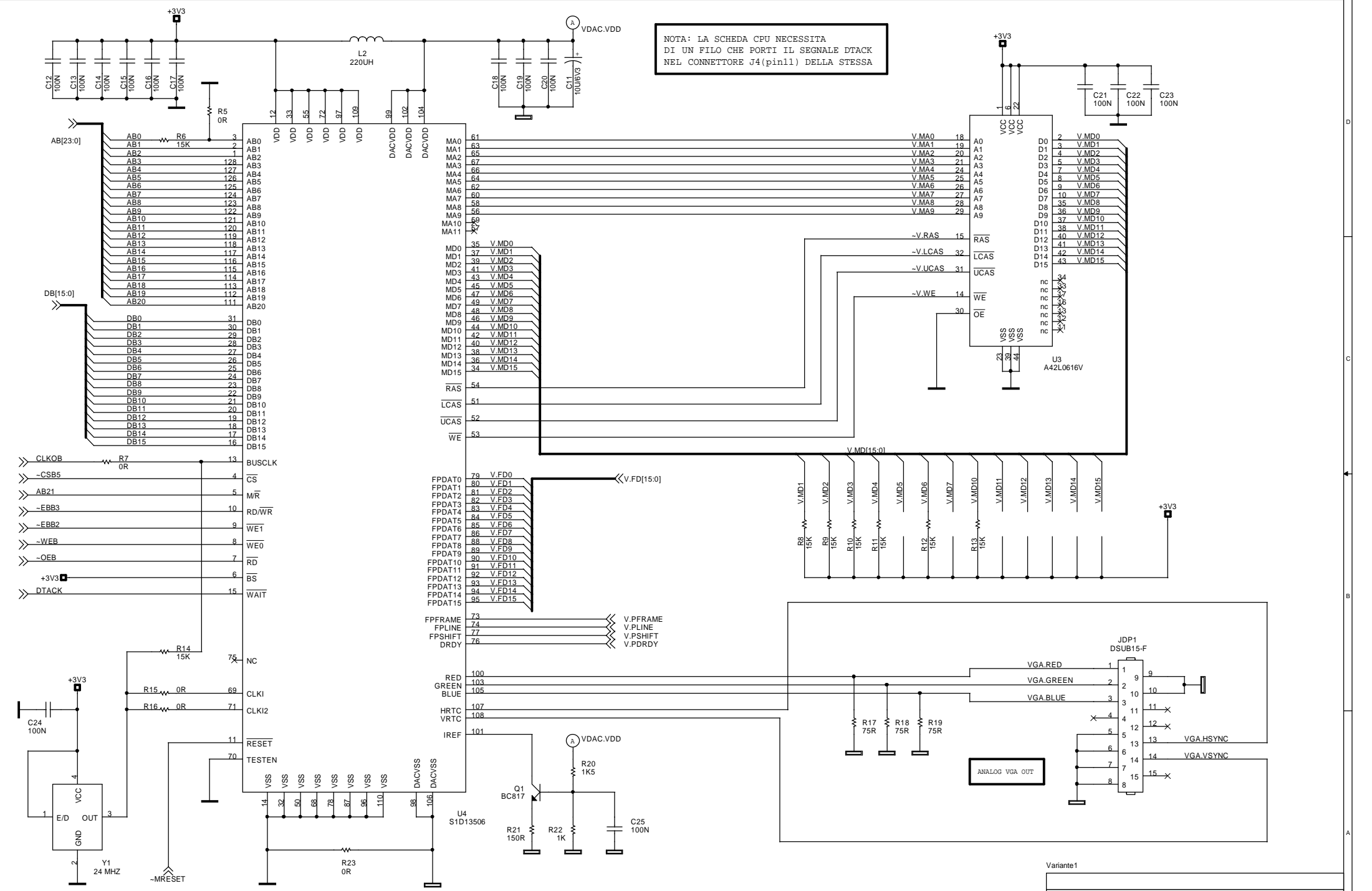
Title		
TRUMPET		
Size	Document Number	Rev
	101850	1.1
Date:	Monday, December 10, 2007	Sheet 1 of 11



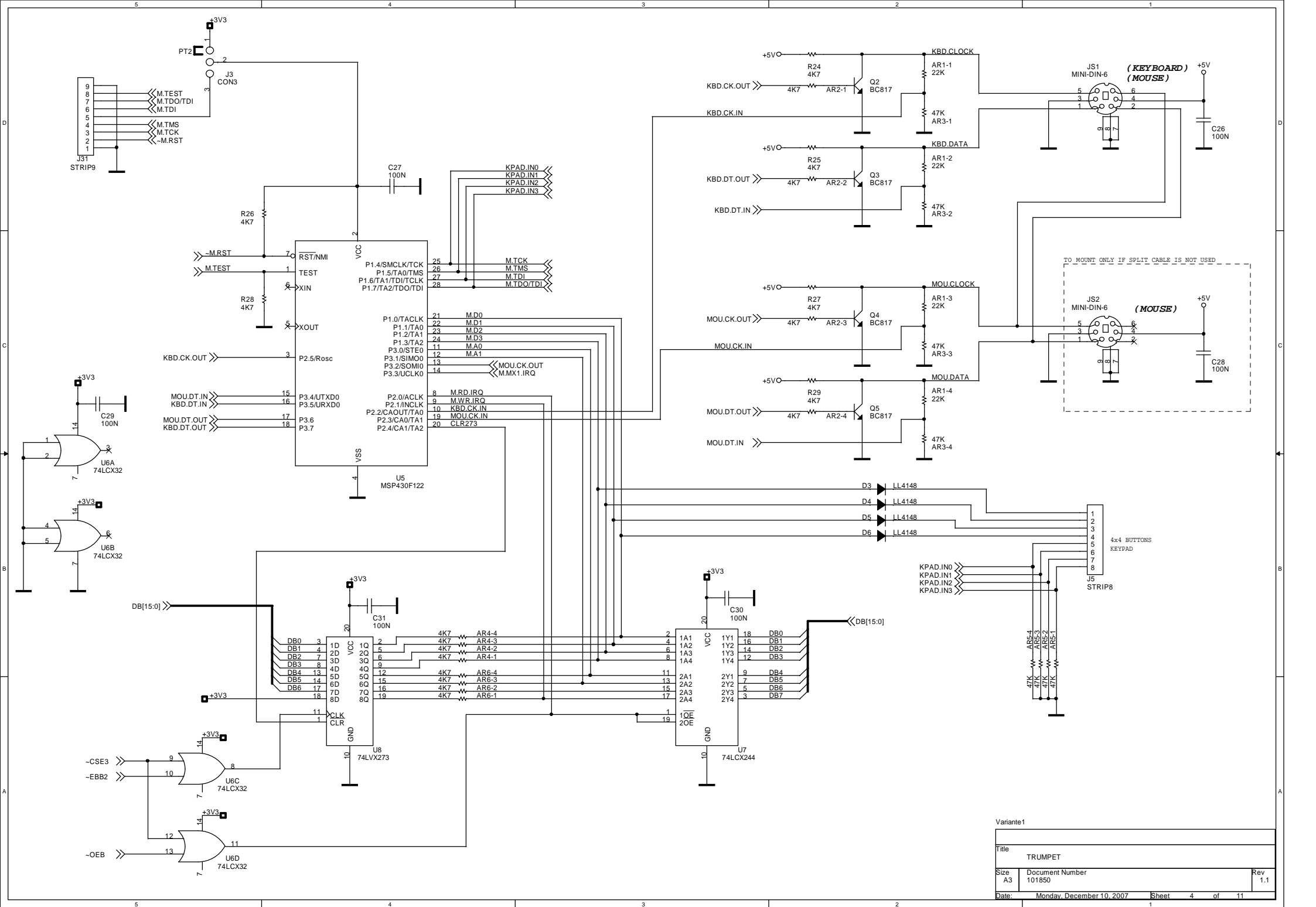
Variante1

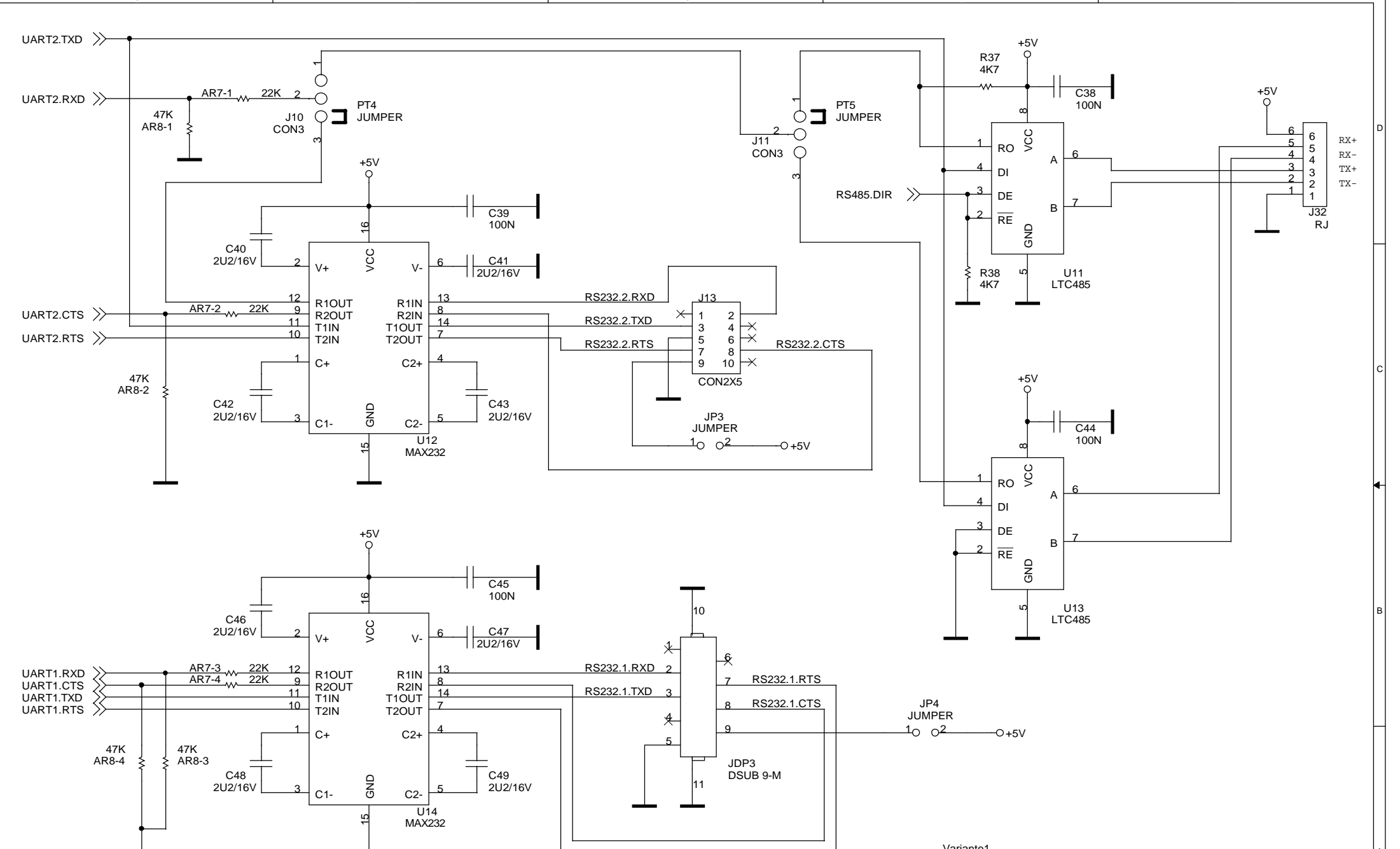
Title		
TRUMPET		
Size	Document Number	Rev
	101850	1.1
Date:	Monday, December 10, 2007	Sheet 2 of 11

NOTA: LA SCHEMA CPU NECESSITA
 DI UN FILO CHE PORTI IL SEGNALE DTACK
 NEL CONNETTORE J4(pin11) DELLA STESSA



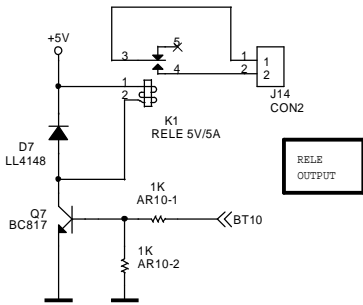
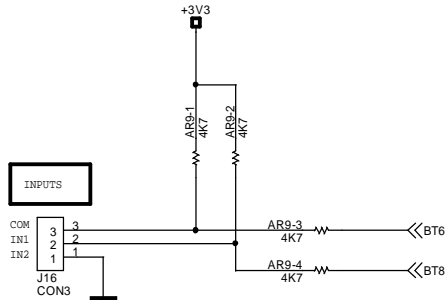
Variante1		
Title	TRUMPET	
Size	Document Number	Rev
A3	101850	1.1
Date:	Monday, December 10, 2007	Sheet 3 of 11



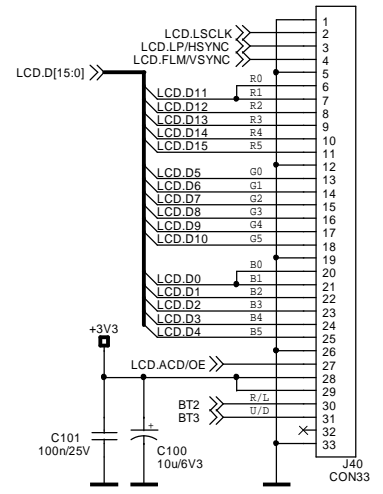
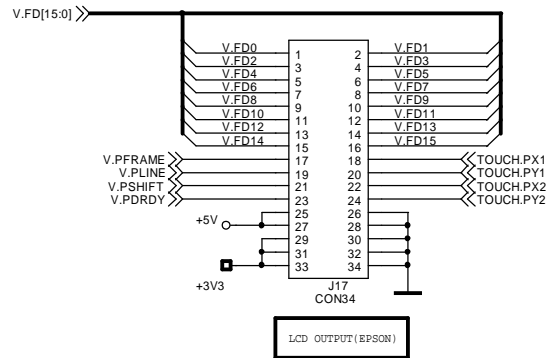
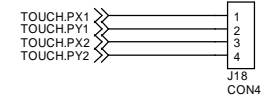
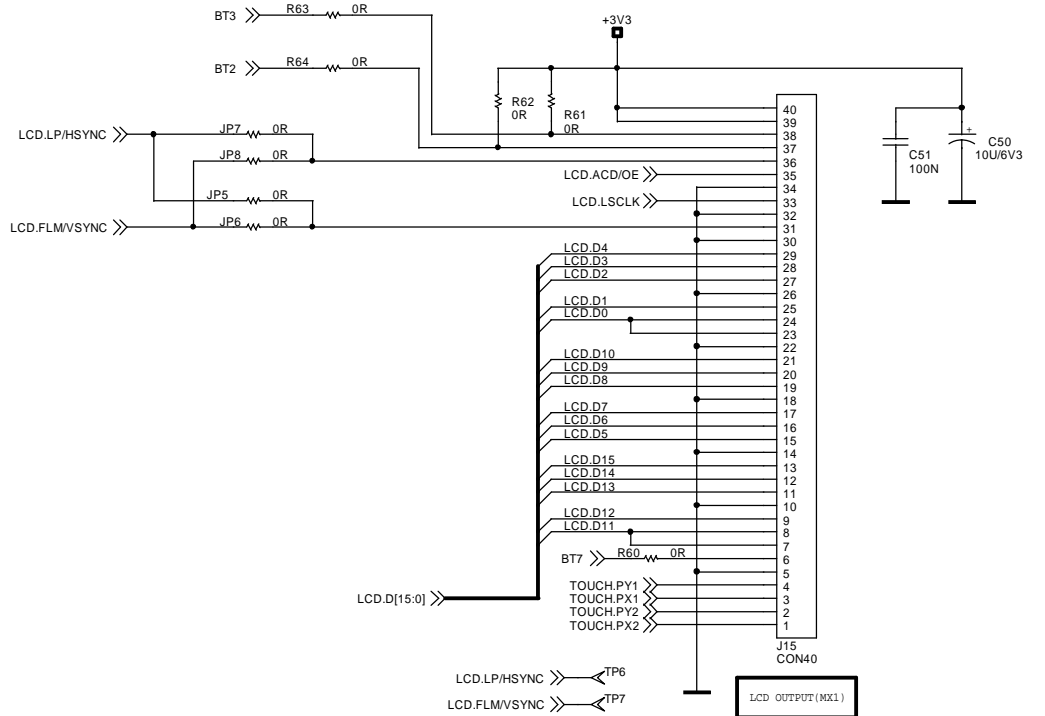
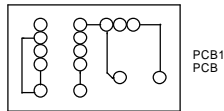
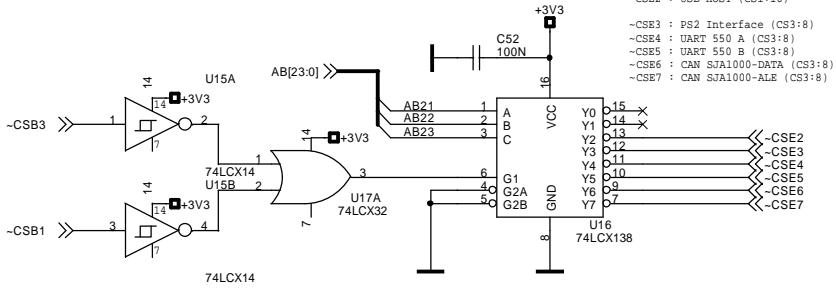


Variante1

Title		
TRUMPET		
Size	Document Number	Rev
A4	101850	1.1
Date:	Monday, December 10, 2007	Sheet 6 of 11

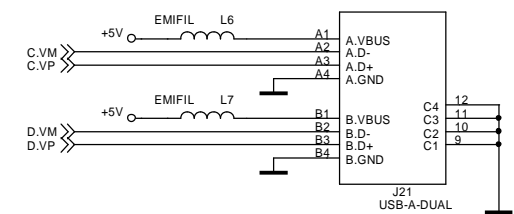
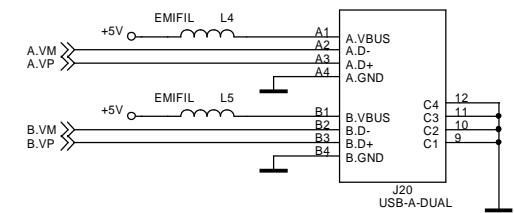
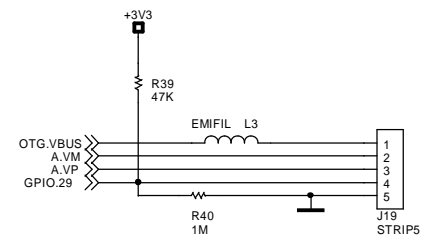
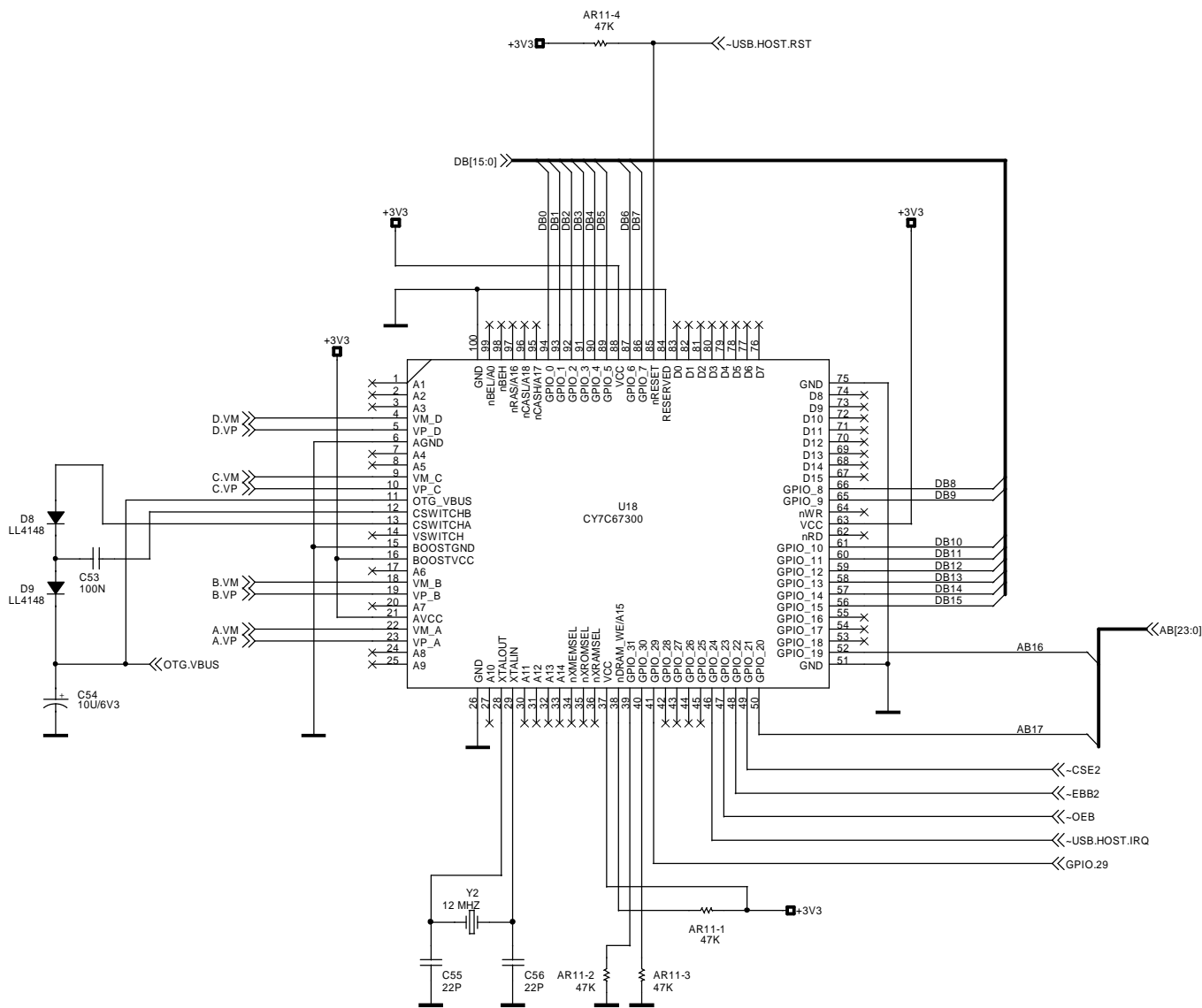


- CSE0 : reserved (CS1:16)
- CSE1 : reserved (CS1:16)
- CSE2 : USB-HOST (CS1:16)
- CSE3 : PS2 Interface (CS3:8)
- CSE4 : UART 550 A (CS3:8)
- CSE5 : UART 550 B (CS3:8)
- CSE6 : CAN SJA1000-DATA (CS3:8)
- CSE7 : CAN SJA1000-ALE (CS3:8)



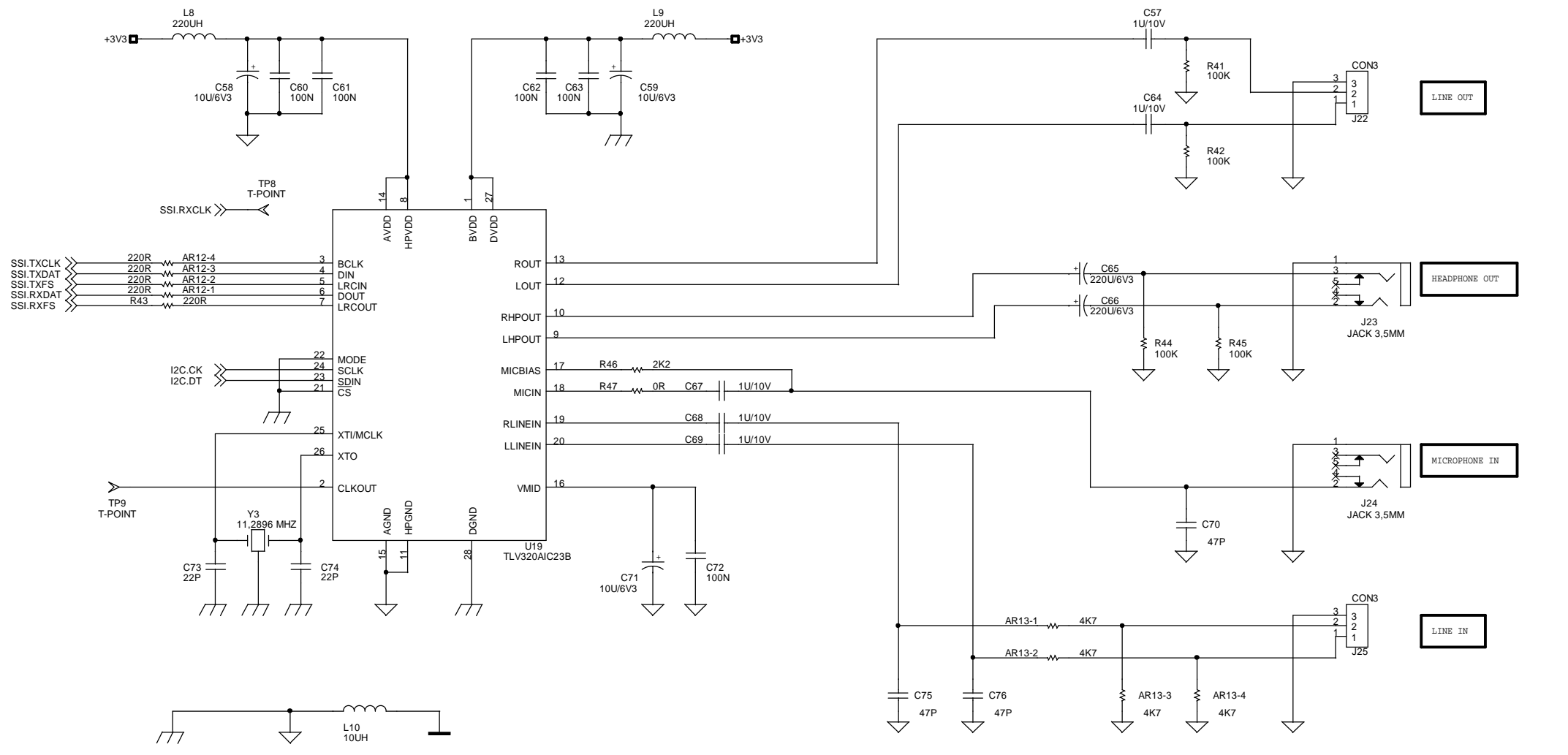
Variante1

Title		
TRUMPET		
Size	Document Number	Rev
A3	101850	1.1
Date:	Wednesday, December 19, 2007	Sheet 7 of 11



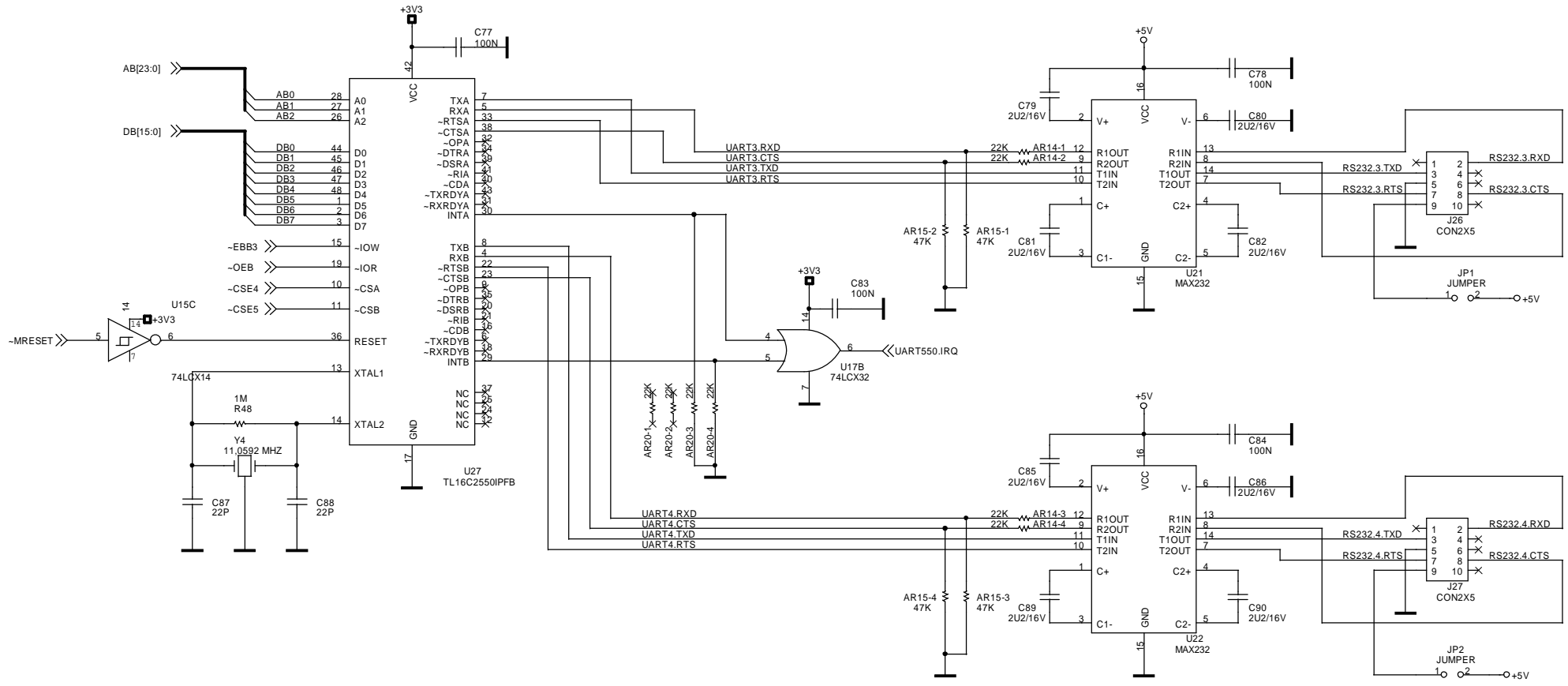
Variante1

Title		
TRUMPET		
Size	Document Number	Rev
A3	101850	1.1
Date:	Monday, December 10, 2007	Sheet 8 of 11



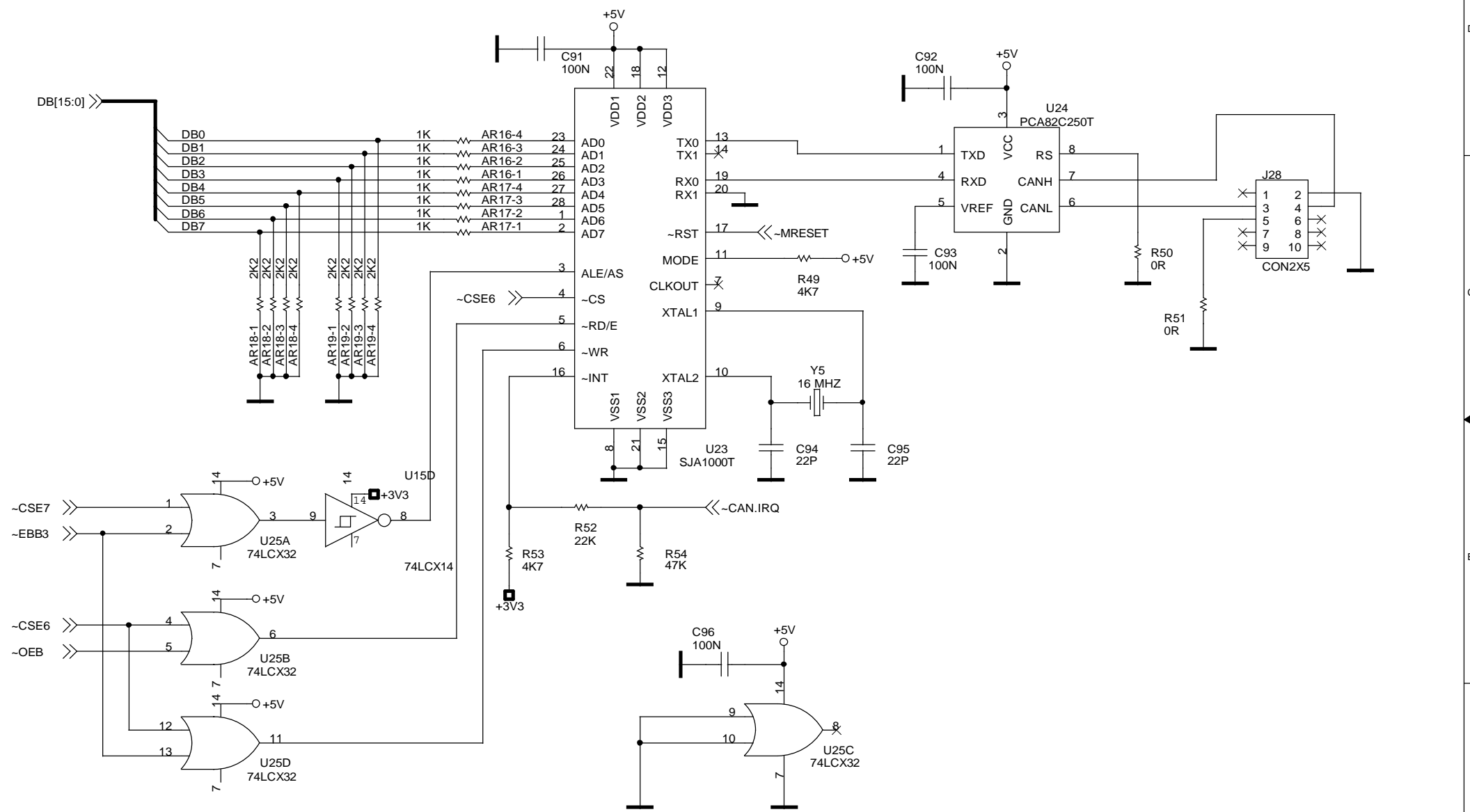
Variante 1

Title		
TRUMPET		
Size	Document Number	Rev
B	101850	1.1
Date:	Thursday, December 13, 2007	Sheet 9 of 11



Variante1

Title		
TRUMPET		
Size	Document Number	Rev
A3	101850	1.1
Date:	Monday, December 10, 2007	Sheet 10 of 11



Variante1

Title		
TRUMPET		
Size	Document Number	Rev
A4	101850	1.1
Date:	Monday, December 10, 2007	Sheet 11 of 11